

INSPIRATIONAL SPACES:

HIRE THE ROUNDHOUSE STUDIOS

“ The Roundhouse Studios offer great spaces. Their spaces are accessible, young people friendly, staff are helpful and warm, and the hiring process is really simple ”

MELANIE ANOUF, PAN INTERCULTURAL ARTS

ROUNDHOUSE
CHALK FARM ROAD,
LONDON, NW1 8EH

ROUNDHOUSE
STUDIOS



Supported using public funding by
**ARTS COUNCIL
ENGLAND**

WE'RE A BIT SPECIAL

The Roundhouse exists to provide a place of inspiration where artists and emerging talent create extraordinary work and where young people can grow creatively and as individuals. Young people are at the heart of everything we do.

Right underneath the iconic Roundhouse Main Space, our Paul Hamlyn Studios offer a range of brilliant facilities including media production suites, band rehearsal rooms, a media lab, the EMI recording studio and the Bloomberg TV Studio.

Our creative projects for 11-25 year olds take place in the Studios all year round. However, during quiet periods, our spaces are available for hire within our opening hours to charities and organisations who work with young people.

Thanks to the diversity and flexibility of our Studios, we are ready to host your event, be it a recording session, a networking event or a workshop. Past hires have included BBC Digital, Afropunk, and Cardboard Citizens.

What's more, all income generated from the hires of these spaces goes towards funding our charitable work with 11- 25 year-olds.

So what are you waiting for?



PRICES AT A GLANCE*

SPACE	HALF DAY - UP TO 4 HOURS	FULL DAY - UP TO 8 HOURS	LONG DAY - UP TO 12 HOURS	CAPACITY
Bloomberg Studio	£120	£216	£288	Standing: 130 people Seated: 68 people
Clore Studio	£120	£216	£288	Standing: 150 people Seated: 68 people
The Hub	£168	£300	£396	Standing: 142 people Seated: 116 people
New Media Lab	£144	£264	£360	18 people
EMI Recording Studio <i>*Fee includes an engineer</i>	£300	£500	£660	6 people
Radio Studio	£360	£600	£792	12 people
Small Midi Suite (10) & DJ Rooms	£48	£72	£102	3 people
Large Midi Suites (11 – 18) & Band Practice Rooms	£66	£90	£132	4 people Band Practice Rooms 5 & 7: 5 people Band Practice Room 8: 6 people

Roundhouse Studios Opening hours:

09:30 - 17:00 Saturday - Monday

09:30 - 21:00 Tuesday - Friday

* These are our spaces, with their capacity and current prices as of July 2017. The prices do not include tutors, youth support or additional technicians. Prices do not include VAT)

ADDITIONAL COSTS

Safeguarding

In line with our Safeguarding guidelines, all staff attending must be DBS checked and a full risk assessment for the activity must be provided in order to confirm the booking. Safeguarding risks will be discussed on the basis of specific activities and relevant control measures agreed on a case-by-case basis.

Visitor Service Assistant

If your staff aren't DBS checked, we will provide a Visitor Service Assistant to safeguard the space at an extra cost of £11 p/h (minimum 4 hour call.)

Youth Support Worker

If you require a more tailored service, the cost of a Youth Support Worker is £15.45 p/h.

Refreshments

Our catering team can provide refreshments at the following cost:

- Tea/coffee/water: £25 per/every 10 people
- Biscuits £1.20 per person

If you have any other requirements, please let us know and we can provide you with a quote.

Additional equipment or space alterations

Visitors to the building get to explore a Grade 2 listed building, where original features sit alongside modern glass and concrete, meaning there's nothing quite like an event at the Roundhouse.

However, due to our listed status, it means that no attachment, fixing or alteration can be made to any part of the original building. In particular it should be noted that no part of the original building is to be considered as load bearing. If you do have requirements for your activity that are not covered by the provision listed in the space list below, please contact studioshire@roundhouse.org.uk to explore what is possible.

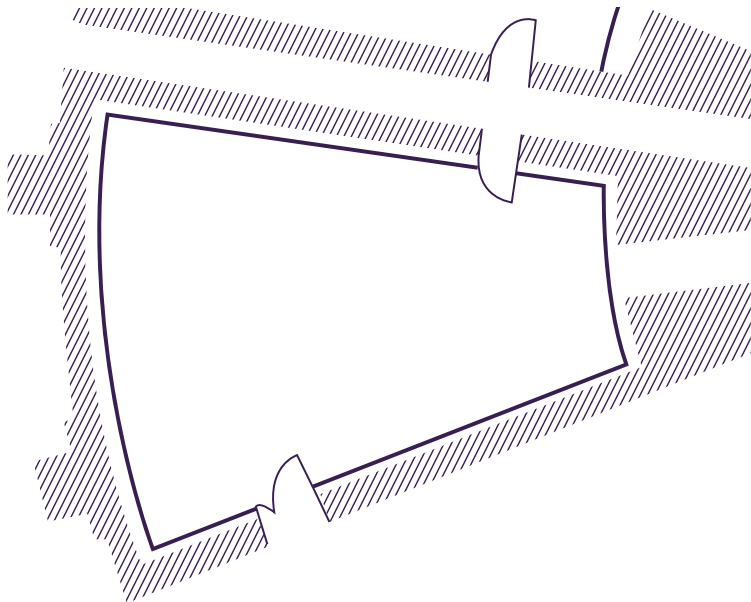


OUR AMAZING SPACES

LARGE SPACES

BLOOMBERG TV STUDIO

The Bloomberg TV Studio is a large studio space with a green screen ideal for filming. Its size suits a broad range of activities, whether it is recording a video, facilitating workshops, hosting talks or simply rehearsing. It is accessed from the Roundhouse Studios or from the Hub Corridor.



Configuration:

- 68 seated / 130 standing
- Dimensions: Three sides at 11m and one side at 3.8 m.
- Area: 76 msq

Load in/load out: via service lift and corridor.

- Goods Lift: 1.45m wide x 2.7m deep x 2m high, 2000kg weight limit
- Corridor at narrowest: 87cm wide x 2.25m high.

Capabilities of the space:

- There are no rigging or fixing points in the Bloomberg.
- No dedicated technical equipment.
- Please discuss your power requirements with our team

Other specifics:

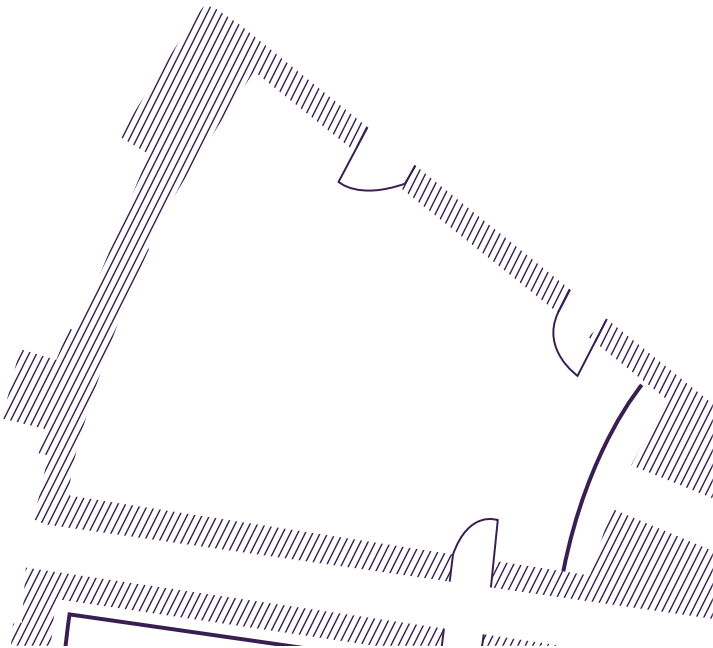
- Haze/smoke – Is not permitted
- SFX – are not permitted
- Full blackout is not possible.
- Please note it is not possible to block or change any of the exit routes from the Bloomberg/Clore

OUR AMAZING SPACES

LARGE SPACES

CLORE STUDIO

With its charming exposed-brick walls, the Clore is a particularly versatile space that lends itself to any type of event. It is also accessible independently of the Studios as it has an entrance leading to the main foyer.



Configuration:

- 68 seated/150 standing
- Dimensions: three sides at 11m and one side at 5m. Area: 86 msq
- Load in/load out – via goods lift and corridor.
- Goods Lift: 1.45m wide x 2.7m deep x 2m high, 2000kg weight limit
- Corridor at narrowest: 0.87m wide x 2.25m high.

Capabilities of the space:

- There are no rigging or fixing points in the Clore.
- No dedicated technical equipment.

- Please discuss your power requirements with our team.
- Cabling may be available on request.

Other specifics:

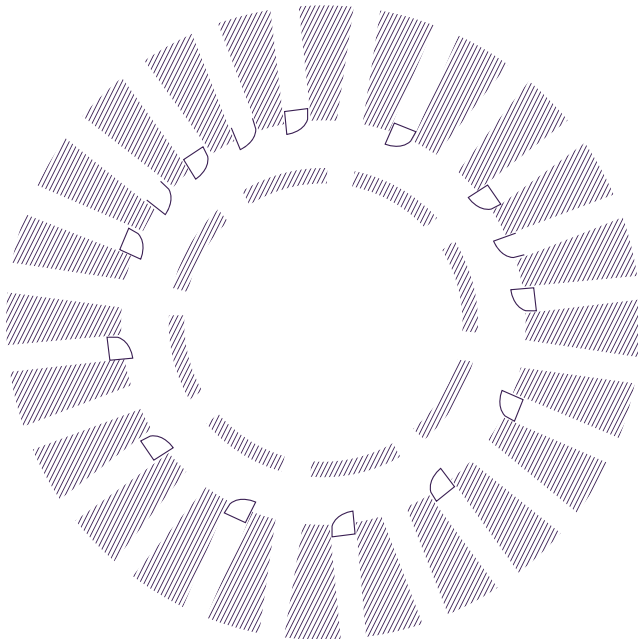
- Haze/smoke is not permitted.
- SFX are not permitted.
- Full black out is not possible.
- Please note it is not possible to block or change any of the exit routes from the Bloomberg/Clore

OUR AMAZING SPACES

LARGE SPACES

THE HUB

The Hub is the heart of the Roundhouse. A circular space located right underneath the Main Space, the Hub has 12 corridors leading to the rest of the Studio spaces. Like the Clore Studio, the Hub is entirely exposed brick, making it one of the most atmospheric spaces in London.



Configuration:

- 116 seated / 142 standing
- Ceiling height: 3.15m
- Diameter: 11m
- Area: 95msq

Load in/load out – via service lift and corridor.

- Service Lift: 1.45m wide x 2.7m deep x 2m high, 2000kg weight limit.
- Corridor at narrowest: 87cm wide x 2.25m high.

Capabilities of the space:

- There is a possibility of noise bleed from the

Main Space above; please speak to the Studios Hire team regarding availability

- Cabling may be available on request.
- No dedicated technical equipment.

Other specifics:

- Haze/smoke is not permitted.
- SFX are not permitted.
- Full blackout is not possible.
- Please note it is not possible to block or change any of the exit routes from the Hub. Fire exit lights must remain on and visible at all times.

OUR AMAZING SPACES

MEDIA LAB

“ The equipment was good,
the technicians super helpful
and the place is great! ”
YOUNG PARTICIPANT, GENERATION ARTS

NEW MEDIA LAB

Perfect for a media workshop, our Media Lab comes with 18 Apple iMac Workstations* (Retina 5K, 27inch, 3.2Ghz Intel Core i5, 8GB RAM, 1TB HD) with controller keyboards (Novation Remote 25SL MIDI Controllers)

Software on workstations:

- Logic Pro X
- Adobe CS6
- Pro Tools 11
- Ableton Live 9 Suite
- Microsoft Office
- plus more

Presentation facilities:

- Ceiling Mounted Optoma DH1011i Projector
- JBL Control 5 Speakers

**please note that workstations in the NML cannot be hired out individually; the room must be hired in its entirety*



OUR AMAZING SPACES

SMALL SPACES



DJ SUITES

Great for budding DJs, we have 1 suite with vinyl and 1 suite with CDs.

DJ equipment you can use:

- CDJ900
- DJM350
- Stanton ST150 Turntable
- Serato SL2 Interface

MIDI SUITES

We have 7 midi suites of all shapes and sizes, kitted out with top-of-the-range equipment and professional standard software including:

1 x Apple iMac Workstation per suite (Retina 5K, 27inch, 3.2Ghz Intel Core i5, 8GB RAM, 1TB HD) with Presonus AudioBox 22VSL, M-Audio Oxygen 49, KRK Rokit RP5 G3 Monitors

Software on workstation:

- Logic Pro X
- Adobe CS6 (Premiere, Photoshop, Audition, After Effects etc)
- Pro Tools 11
- Ableton Live 9 Suite
- Microsoft Office
- plus more



BAND REHEARSAL ROOMS

Each of our 3 band rehearsal room comes with:

- Drum kit (without cymbals)
- Ashdown Five 15 bass amp
- Yamaha MG82CX mixer
- Mackie SRM450 active monitor (on a speaker stand)

**Guitar amps, cymbals, instruments, microphones, cables etc can be borrowed from the tech store and returned at the end of the session.*



OUR AMAZING SPACES

EMI RECORDING STUDIO

The Roundhouse has its own recording studio with high-quality recording equipment. The EMI Studio comes with an engineer who'll support you and record your music to a professional standard.

MICROPHONES

Neumann U87
Neumann TLM103
Neumann KM140
AKG C414
AKG D112
Electrovoice RE20
SE R1
Sennheiser MD441-U
Shure Beta87a
Shure SM57
Shure SM58

INSTRUMENTS

Yamaha S90es Stage
Piano
Korg MS20 Mini
Oberheim Matrix 1000
Gibson Les Paul Studio
Gibson SG Bass
Ludwig Blue Label Drum
Kit, with Gretsch Snare
and Sabian / Zildjian
Cymbals

SOFTWARE

Pro Tools HD Native 12
Waves Plugins
Sound Toys Native
Bundle
Antares Auto Tune
Melodyne
McDSP Native Suite
Metric Halo Production
Bundle

HARDWARE

Focusrite ISA428 MkII
Manley Force
Empirical Labs FATSO
EL7x
DBX 160XT

AMPS

Orange Thunder 30C
Black Star ID60
Marshall MG100
Ashdown MAG 300 EVO
II

WORKSTATION

Apple iMac (Retina 5K,
27-inch, 4GHz Intel Core
i7, 32GB RAM, 512GB
Flash)
Avid C24 Console

MONITORS

Genelec 8260A
Yamaha HS80M



OUR AMAZING SPACES

RADIO STUDIO

Home to our very own radio station Roundhouse Radio, our state-of-the-art Studio has been the training ground for several BBC Radio 1 stars. Past hires have included Ninja Tune, National Prison Radio and Annie Nightingale (Radio 1/Xtra). The Radio Studio is perfect for training young people in broadcast skills.

Equipment:

Console: Soundcraft Series15

Monitors: Yamaha MSP3

Interface: M-Audio M-Track Eight

Computer: Dell Optiplex 7010

Software: Audition CS6, Myriad V4

Headphones: Sony MDR-7506

Headphone Amp: MTR HPA-6

Microphones: Rode Broadcaster

Microphone Processors: DBX286s

Misc: D&R Telephone Hybrid 1



HOW TO HIRE A SPACE

Inspired by what you've seen?

To arrange a site visit or discuss the possibilities with a member of our team, please contact us on: studioshire@roundhouse.org.uk.
Direct line: 020 7424 7061

We are happy to hire the Studios at reduced rates to local organisations or charities who work with young people. If you would like discuss our community rates or for further information, please let us know.

There is also the possibility of hiring the spaces at a full corporate rate for those organisations that need a more tailored type of service and host larger events. Just let us know and we will put you in touch with our Events team.

“ The Roundhouse staff were incredibly helpful and efficient and made us and our guests feel very welcome. Everyone thoroughly enjoyed the event’ ”

HANNAH NEWMAN, CAMDEN SPARK





“ The space was great and everyone on your team was so helpful and friendly. The whole experience was a pleasure ”

JARED FRYER, CINEMA JAM